

Molmic

Molmic Autumn/ Winter 2018 Moodboards

Molmic

Molmic Autumn/ Winter 2018 Moodboards

KINSHIP

CYPRESS - Durango / Hug

MOJO - Devon / Lennon

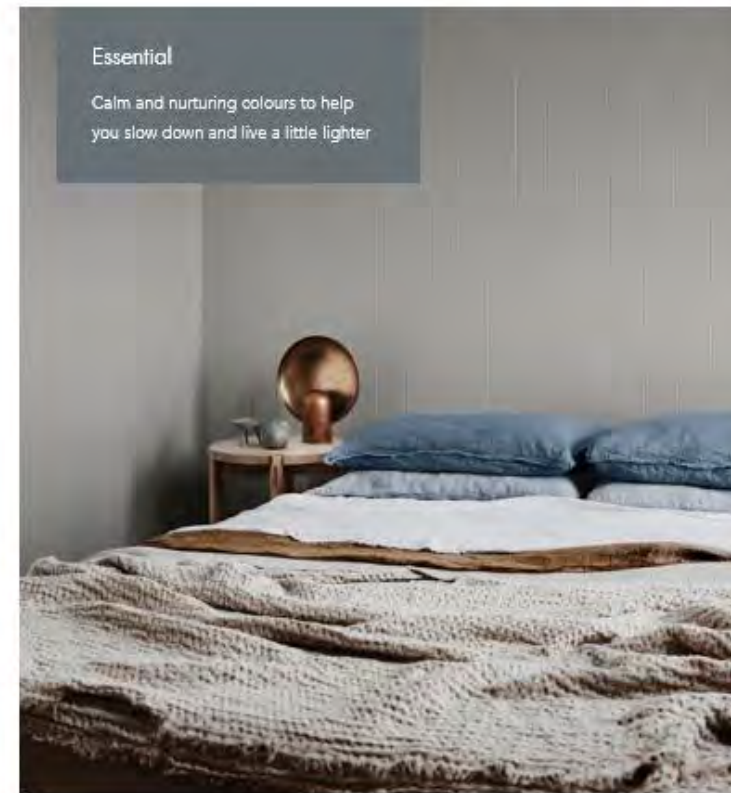
KIRBY - New Access 2018

ALLY - New Access 2018



Essential

Calm and nurturing colours to help you slow down and live a little lighter



ESSENTIAL

PALM SPRINGS - Lennon

SOUTHBEACH - Hudson / Lennon / Tommy

ALPINE / ALLY - New Access '18

ASTON - Tommy

DUNE - Hug / Durango / Allied

CYPRESS - Durango / Hug / Bologna

PARKER - Turin / Lennon

HERBERT - Maison

ESCAPADE

RYDELL - Maison

BONNIE - Oxford / Cleo velvets

CYPRESS - Bologna

SHERMAN - Lennon / Heron

ALICIA - Levi / Lennon

ZAC - Pathfinder range, all over prints

HEATON - Victory / Pathfinder range



Reflect

Juicy greens and moody hues to blend your past with your present



REFLECT

BONNIE - Oxford / Cleo velvets

CYPRSS - Mammoth

BARKER - Vanish / Settler

DUNE - WyeRiver leather

BENTO - Mammoth

RIDLEY - Chateau / Rio / Pathfinder range

FLEUR - Cleo / Mystere / Lennon

HUDSON - Coco

VIVIENNE SOFA & CHAIR - Victory / Lennon



Molmic
Autumn/ Winter 2018 Moodboards

Essential

Calm and nurturing colours to help you
slow down and live a little lighter..

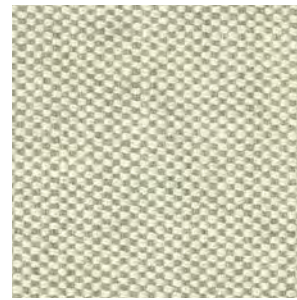
Essential.



The familiar comfort of a cup of tea curled up on a sofa with your favourite book.. Essential reminds us to enjoy the simple things and unwind.

Choose colours, textures and seating comfort that makes you feel happy.

Colours like Organic Green such as Gravity Cloud apart of the new Access 2018 Fabric Range.



Lennon Shade 5



Gravity Cloud



Austin Seafoam Cushion 50cm

WEAVE



Hudson Olive



Tommy Pumice



Austin Sand Cushion 50cm



Organic green such as Hudson Olive pairs perfectly with new Southbeach model.

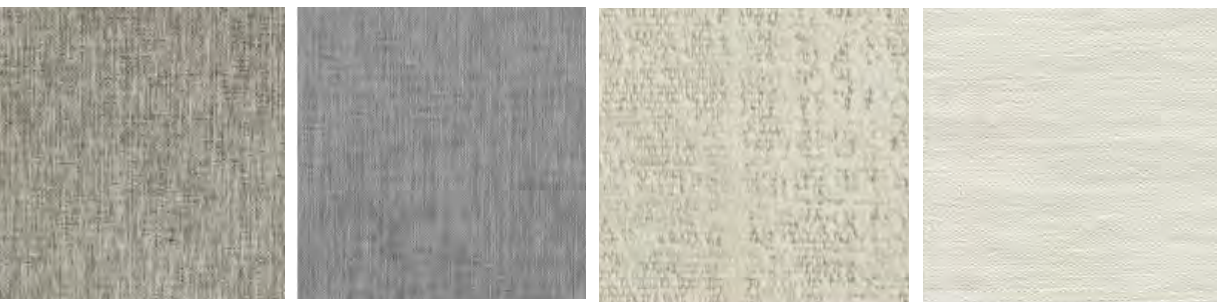
Adding inviting, blush colours to your grey scheme can create a focal point within a space or highlight a detail.



Simple and sophisticated, there is something timeless about a good grey fabric on a sofa like Tommy Silverstreak or Grey on the Aston modular or new Devon Pigeon apart of Access 2018 Fabrics Range.



Maison Blush, still a popular choice, this season we also recommend lighter tones of Opal, Mist and Aloe on our Herbert and Crawford designs.

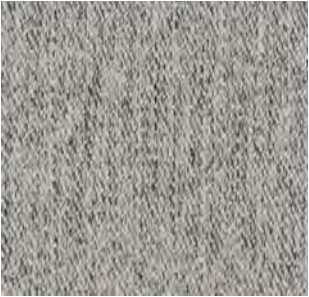




Hug Chinchilla and Durango Aluminium are great alternatives to Bologna boucle fabric. Still offering a soft-to-touch texture pairing perfectly with Cypress' sink-in style lounging.



Hug Chinchilla

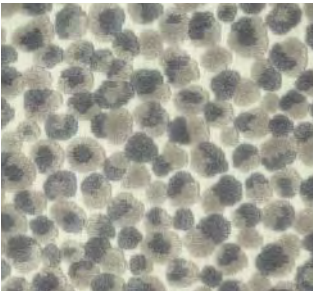


Durango Aluminium



Monterey Sandstorm Cushion

Contrast the warmth with soft denim blue accents and knitted throws and cushions.



Allied Steel



Turin Navy



Lennon Shade 4



Combine natural tones such as soft brown, sand and grey greens for a relaxing scheme conducive to taking time out.



Molmic
Autumn/ Winter 2018 Moodboards



Escapade

Get your home feeling
as good as a holiday!

Escapade



Pack your suitcase, don your tropical prints and get ready for a holiday to remember!

Take a colour vacation. A playful clash of colours helps to brighten your space and feels as good as a holiday!

Tones of pale mint and soft blush pinks on the popular Rydell sofa, and indigo hues on Mojo's fun shape design.



Maison Mist



Maison Blush



Antila Indigo



Lennon Shade 5



Sabania Frangipani



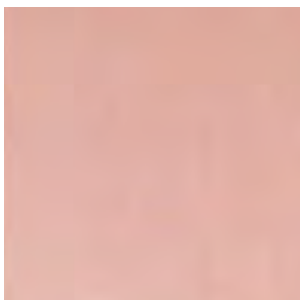
Heron Snow



Don't be afraid to mix up your decades and take a chance on unexpected colour combinations!



Hug Shark



Cleo Rosewater

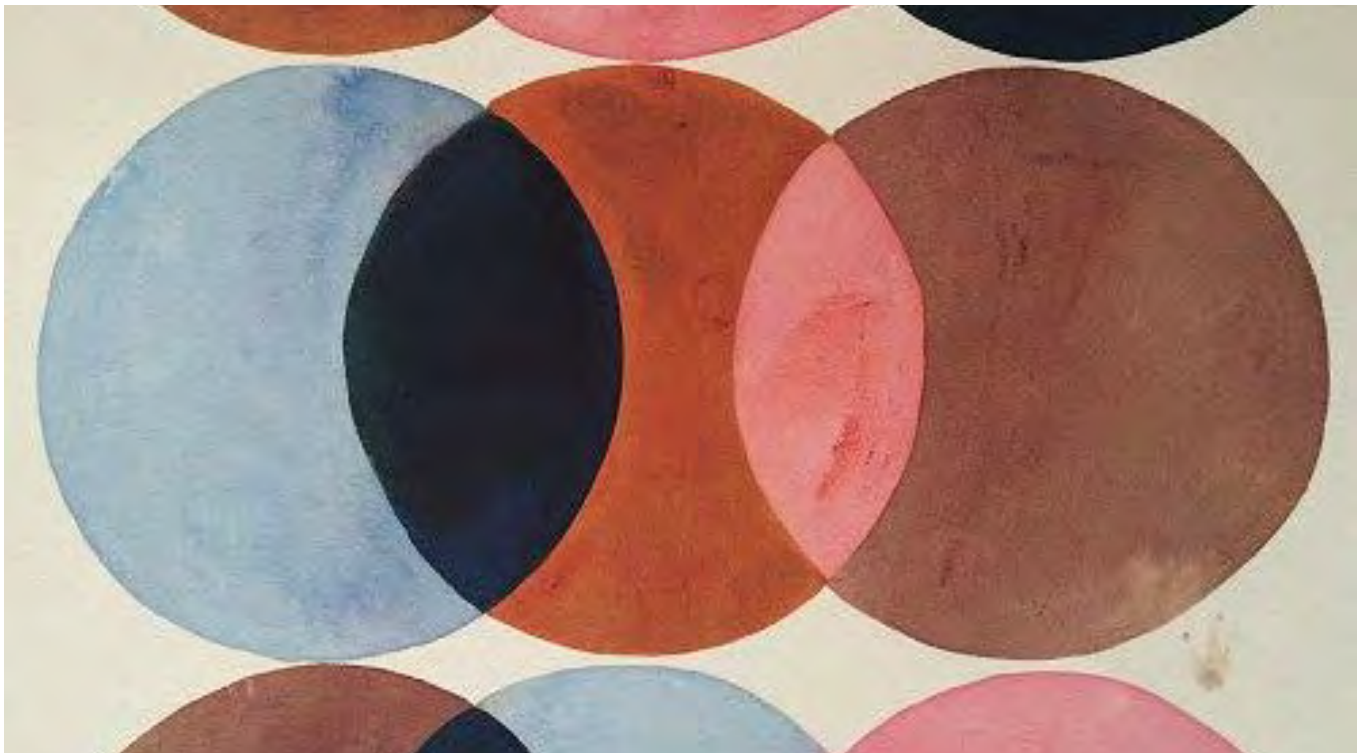


Paloma Blush Cushion 50cm

WEAVE



Indulge in oversized comfort with the Campbell, Danube & Cypress designs.



Keep the look fresh with accents of green and solid brass or marble accessories like the Oscar table range, new to Molmic.



Rhodes Lunar



Refract Lotus



Paloma Ink Cushion 50cm



These designs allow for different textures, think Rhodes fabric for a coastal look, Hug for wintery comfort and try textures like Refract from the Pathfinder range.



Molmic

Autumn/ Winter 2018 Moodboards

Kinship

Fill your home with warmth and positivity..

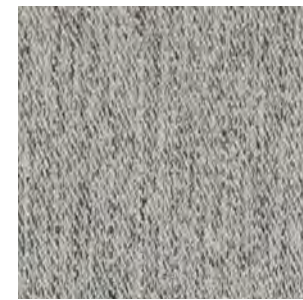
Kinship



A colourful mish-mash of folklore influences will fill your space with warmth and positivity.

Choose colours, textiles and textures that make you feel happy, at the end of the day comfort is always on our mind.

The subtle blue undertone in Durango Aluminium can help elevate the grey scheme, creating interest.



Durango Aluminium



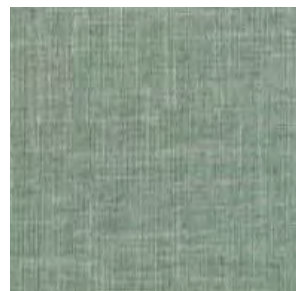
Gravity Brick



Jericho Indigo Cushion 50cm

WEAVE

Cypress provides the ultimate in relaxed seating comfort with thick Molmic Feathertop cushioning



Pulsar Cloud



Wye River Olive



Lennon Shade 36 + contrast piping

Organic green like Wye River Olive leather pairs perfectly with warmer terracotta hues of Lennon and Gravity fabrics.



Molmic
Autumn/ Winter 2018 Moodboards

Reflect



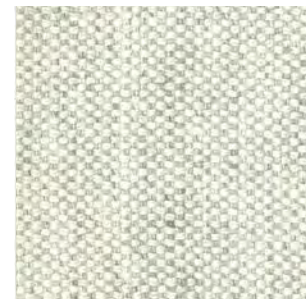
Designs that are not affected by the passage of time or changes in fashion

Reflect



Endure piece of mind with designs and styles that wont date. Like the Hudson, timeless and designed to compliment any living space.

Enjoy moody hues of olive and luxury textures like Victory velvet and Refract apart of the Pathfinder range. Combine bold and precious materials of brass, marble and glass.



Lennon Shade 4



Coco Cognac



Cardamom Sumac Cushion 50cm

WEAVE



Victory Storm



Refract Storm



Austin Sand Cushion 50cm

Pair the classic form of new Vivienne sofa and Fleur design with luxurious Victory velvet or 100% cotton Lennon fabric.



Add a touch of indulgence to your spaced by combining luxe finishes with a palette of precious jewel tones.

We introduce leather on the Rydell and Barker designs this year. Molmic Leathers have been carefully chosen with a great colour palette to choose from including Wye River Anthracite.



Vanish Charcoal



Settler Black



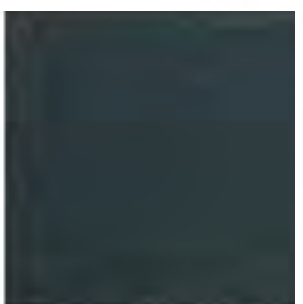
Cleo Oyster



Wye River Anthracite



Durango Dune



Mammoth Ink Blue



Zoe Blush Cushion 50cm

